

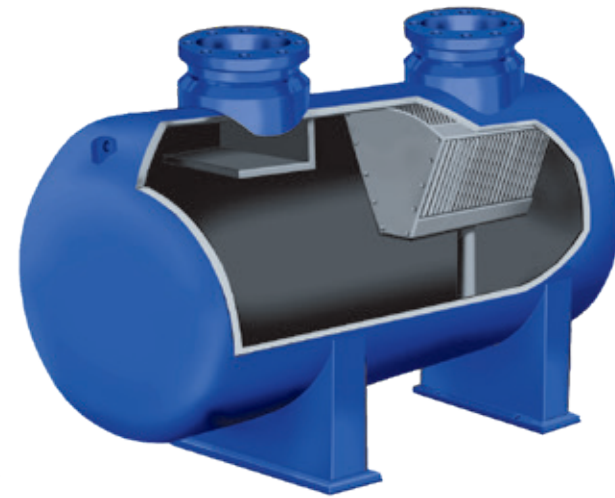
## Vane Style - Gas Separators & Scrubbers

The **Series 95** vane mist extractor can be found throughout the industry as production separators, three phase separators, knock-out drums and in a variety of other applications where liquid removal is required. The Series 95 uses the proprietary Wave Plate Vane mist extractors for high efficiency, reliable, free liquid and aerosol mist removal. Units are available in a Separator design where inlet and outlet connections are in-line or in a Scrubber design where inlet and outlet connections are alt-line which allows for the handling of slugs of liquid.

Sizes range from 12" through 120" diameter up to 600# ANSI rating in vertical and horizontal configurations.

### Typical Applications:

- Processing Plant Feed
- Metering Stations
- Gas Storage
- Compressor Stations
- Regulator Stations
- Natural Gas Power Plants



Series 95H-VBANK Scrubber



Series 95V Separator

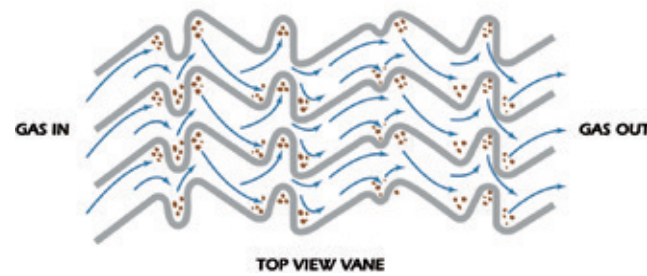
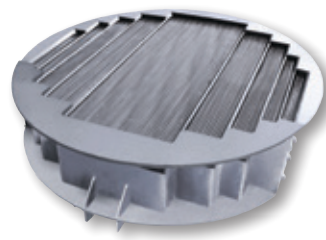


Series 95SV Scrubber

### WAVE PLATE VANES

The Wave Plate Vane provides a controlled change of direction for the gas stream. Liquid droplets impinge upon the vane plates and become trapped in individual drain passages where they collect and coalesce until heavy enough to drain out by gravity.

- 98% efficiency of liquid droplets 8-10 microns and larger
- High liquid loading capability
- Best for removing hydrocarbon liquids and water
- 4 to 1 turndown ratio



**WARNING:** This product can expose you to chemicals including 1,3-Butadiene or Carbon Black which are known to the State of California to cause cancer. For more information go to [www.P65Warnings.ca.gov](http://www.P65Warnings.ca.gov).

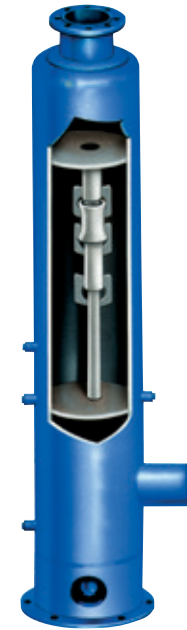
## Cyclotube® Style - Gas Separators & Scrubbers

The **Series 95-CT** proprietary two stage vertical tube separation system has proven to yield high efficiencies for mechanical or non-disposable separation devices. The **Cyclotube** is used in numerous gas streams for bulk liquid separation and offers a higher efficiency option to vanes. They have a lower susceptibility to plugging and work well with low surface tension "crawling" type liquids. Units are available in a Separator design where inlet and outlet connections are in-line or in a Scrubber design where inlet and outlet connections are alt-line which allows for the handling of slugs of liquid.

Sizes range from 12" through 120" diameter up to 600# ANSI rating in vertical and horizontal configurations.

### Typical Applications:

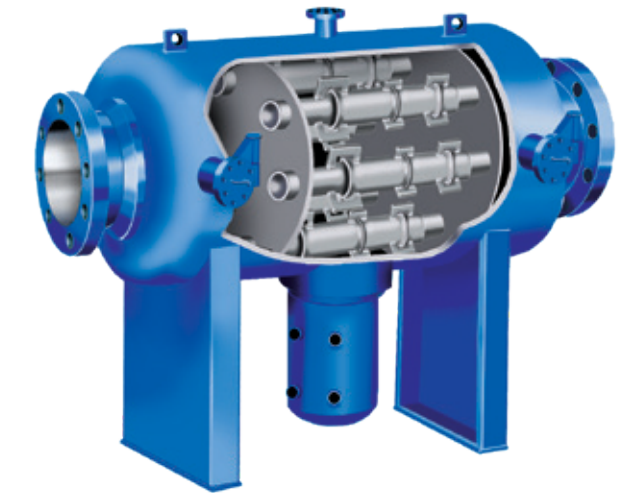
- Compressor Interstage
- Metering Stations
- Regulator Stations



Series 95V-CT Separator



Series 95SV-CT Scrubber

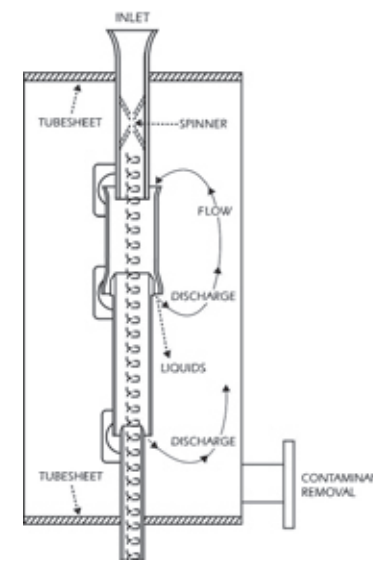


Series 95H-CT Separator

### CYCLOTUBE®

The Cyclotube takes the incoming gas stream and applies a centrifugal motion to it which separates particles from the gas. The inertia imparted upon the liquid particles by the swirling motion forces them to the outer wall, where they are ejected into a quiescent zone for removal.

- 98% liquid droplets 3-5 microns and larger
- Best for removing lube oil, glycol, paraffin, brine, asphaltenes
- Low susceptibility to plugging
- Highest efficiency on "crawling" liquids and low surface tension liquids
- 4 to 1 turndown ratio



**WARNING:** This product can expose you to chemicals including 1,3-Butadiene or Carbon Black which are known to the State of California to cause cancer. For more information go to [www.P65Warnings.ca.gov](http://www.P65Warnings.ca.gov).